



Hawthorn Green



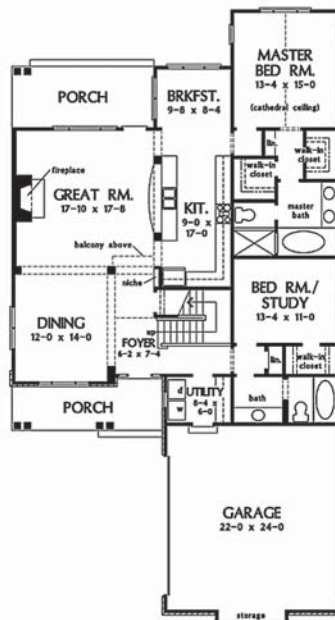
The Abbot

Possessing radiant curb appeal, this design's stone and siding façade stylishly blends with triple gable peaks, columns and decorative windows to showcase a truly unique exterior.

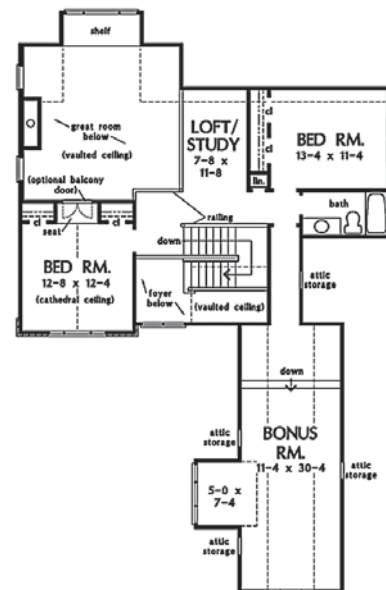
A grand staircase immediately greets guests in the formal foyer, while an adjacent art niche adds flair. The open dining and great rooms permit a natural traffic flow and embrace the home's open layout. The breakfast room overlooks a rear porch.

Completing the first level is a spacious master suite and study/bedroom with nearby full bath. Featuring a private privy, dual vanities, separate shower and tub, the master bath's details fuse functionality with modern living.

The upstairs consists of a loft, generous bonus room and secondary bedrooms with a built-in balcony seat



FIRST FLOOR PLAN



SECOND FLOOR PLAN



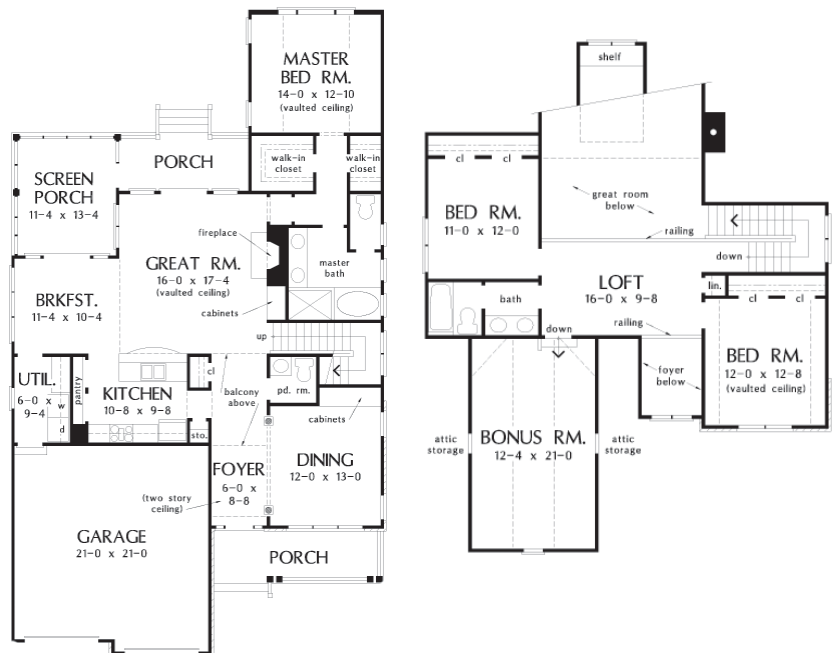


Hawthorn Green



The Madaridge

This colonial home with Southern flair is as inviting on the outside as it is on the inside. The floorplan features a first floor master suite, screened porch and loft. French doors, a cathedral ceiling and fireplace highlight the great room. Note the built-in cabinetry double vanities, columns and bonus room.



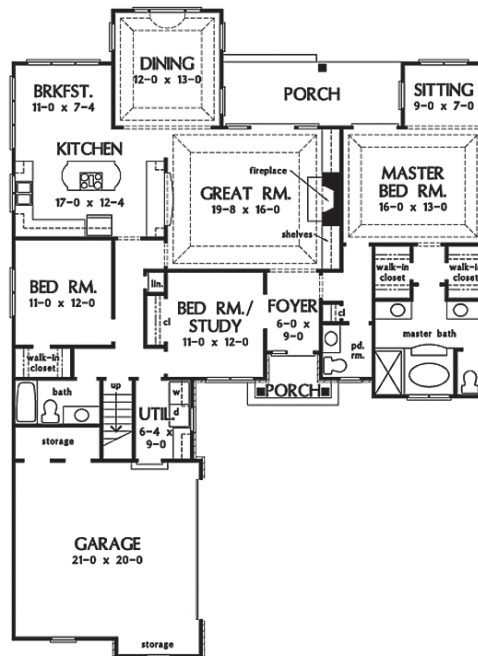


Hawthorn Green



The Adcox

This house plan combines stone and siding to create stunning curb appeal. Columns and an arch make a dramatic entrance to an open floorplan. A tray ceiling crowns the great room that features built-ins, French doors, a fireplace, and a kitchen pass-thru. Windows surround the dining room and breakfast nook.



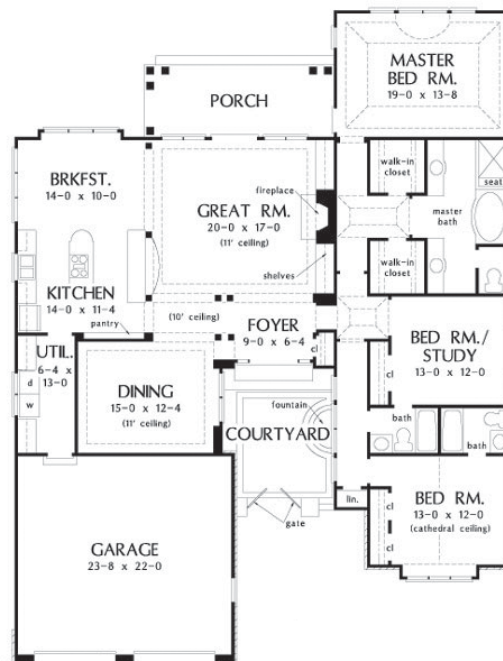


Hawthorn Green



The Provence

An impressive court with a fountain leads to a grand entryway with double doors and a large transom. The family floorplan divides the sleeping and gathering quarters, while a spacious utility room and pantry cabinet create room for additional storage. Columns, built-ins and a barrel-vault arch add custom touches.



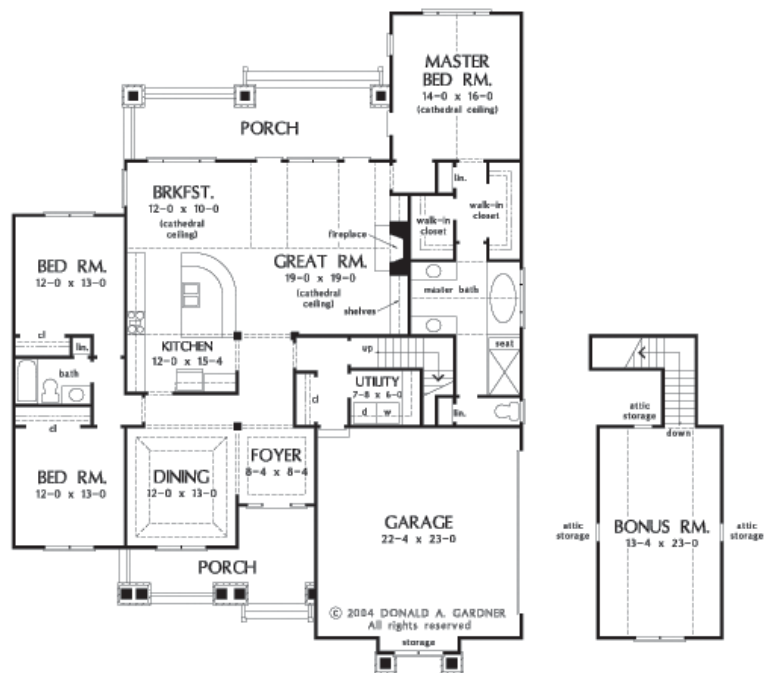


Hawthorn Green



The Summerhill

Double dormers echo the dual-arched portico, as twin sets of tapered columns provide architectural detail in this lavish exterior. Vaulted ceilings offer vertical volume throughout the open living spaces. Ceiling treatments enhance the dining room and foyer, and a large, rear porch to enjoy Mother Nature rests off the master bedroom.





Hawthorn Green



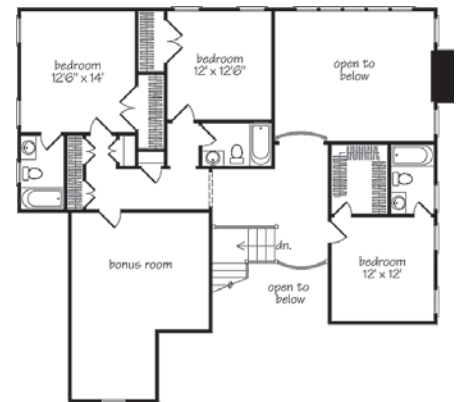
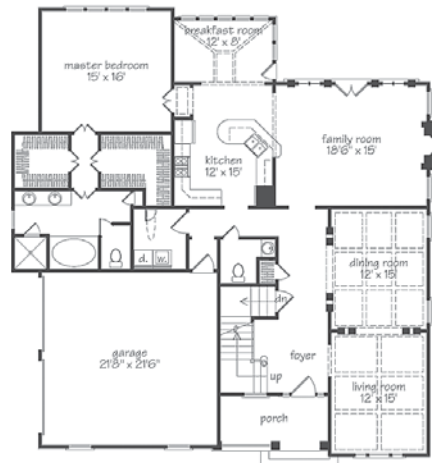
The Hawthorn

Two-story ceilings in the foyer and family room create a sense of spaciousness. 9 foot ceilings on first floor, 8 foot ceilings on second floor.

Formal living and dining rooms are distinguished by columned entries and coffered ceilings. Gracious family room includes fireplace and a set of French doors that open to outside.

Three secondary bedrooms upstairs have private baths. Master bedroom connects to large his-and-her walk-in closets and master bath.

A bonus space on the second floor could be turned into a rec room.





Hawthorn Green



The Bramble

Exquisitely French Country in style, this beautiful home will fit on a narrow lot with little sacrifice of space within.

An office lies off the foyer that leads into the family room with three windows to let in light. Room for a built-in media center is placed on one side of the fireplace.

The eating area is open to the kitchen for convenience.

On the upper level, three family bedrooms share a hall bath and loft while the master suite enjoys its own bath with double sinks and two walk-in closets.

